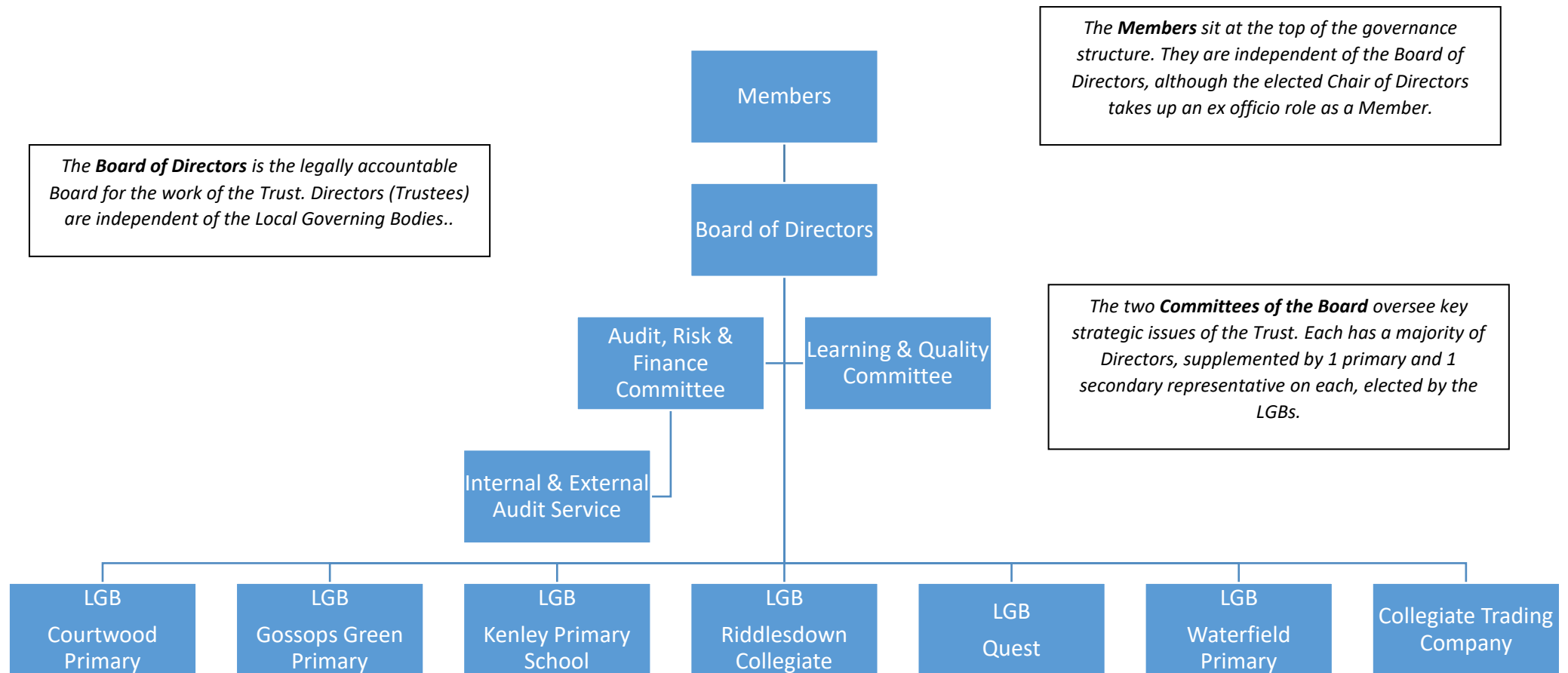




## GOVERNANCE STRUCTURE 2022/23



Members	Directors / Trustees	LGB Structure
<p><b>Saqib Chaudhri</b></p> <p><b>Tricia Farrelly</b></p> <p><b>Philip Hogan</b></p> <p><b>Sue Lewis</b>                      <i>Chair</i></p> <p><b>William Whitmarsh</b></p>	<p><b>Janet Akala</b></p> <p><b>Keith Beattie</b></p> <p><b>David Butler</b>                      <i>Chair of LQC</i></p> <p><b>Soumick Dey</b>                      <i>CEO</i></p> <p><b>Markieu Hayden</b>                      <i>Safeguarding</i></p> <p><b>Philip Hogan</b>                      <i>Chair</i></p> <p><b>Fiona McSorley</b>                      <i>Vice Chair</i></p> <p><b>Tim Rodwell</b></p> <p><b>Simon Rowley</b>                      <i>Chair of ARFC</i></p>	<p><i>Principal</i></p> <p><i>Parent Governor</i></p> <p><i>Parent Governor</i></p> <p><i>Staff Governor</i></p> <p><i>Staff Governor</i></p> <p><i>LA Governor</i></p> <p><i>Trust Governor</i></p> <p><i>Trust Governor</i></p> <p><i>Trust Governor</i></p> <p><i>Trust Governor</i></p> <p><i>[Trust Governor]</i></p> <p><i>[Trust Governor]</i></p>